

# Test Unit



STOLZ test unit is a modern tool provided for our customers. It is fitted with 2 large halls, a grinding hall and a multipurpose hall.

It has been designed to carry out tests on pilot units and on real equipment with batches reaching up to several tons. Our aim is to offer tests in industrial conditions.

Several machines are dedicated to the unit : mixer, crumbler, hammermill, turbo sifter, flaker, multicracker, filter, pellet mill...

A laboratory is provided to conduct an accurate analysis of the test results and to produce test reports based on scientific data. Isolated from our factory and offices, tests on new process are carried out in this unit in strict confidence. A meeting room, a wifi internet access, a change house with shower and required protection equipment are at your disposal.



# Test Unit

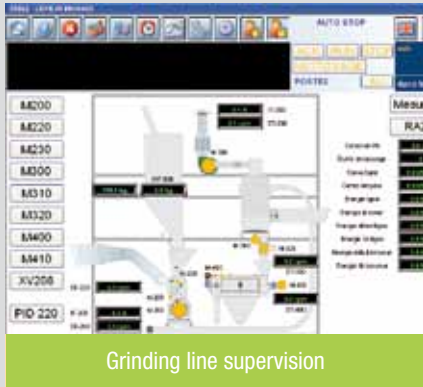


«Multi purpose» test hall



Mixing tests

## Grinding line



Grinding line supervision

The grinding part of our test unit is fitted with a complete fine grinding line with pneumatic transfer.

Fully operational, the grinding line is designed to carry out complete tests with product batches provided by our customers.

It consist of a RMF 14 fine hammermill and its ABMS feeder.

A pneumatic transfer carries the ground product to a BCMT 600 turbo sifter.

Suh installation is driven by a supervision ensuring a complete control of the line and the recording of useful details about the running test (energy consumption of the hammermill and the whole unit, product capacity, dust emissions control, temperatures, pressure drop...).

A complete laboratory equipment is designed to take accurate measurements of final product quality (grading, moisture rate, oil quantity,...).

Qualified operators are dedicated to testing. Trained to process optimization, they have the experience of various raw materials and varied test purposes.



Sampling collection



Laboratory