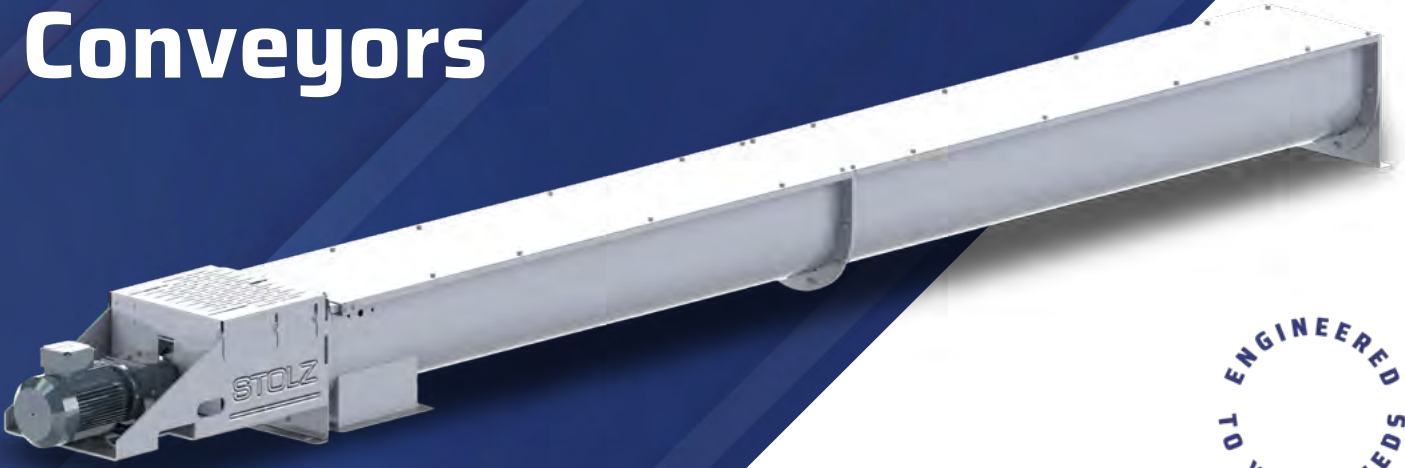


STOLZ

Screw Conveyors



ENGINEERED
TO YOUR NEEDS

The screw conveyor is designed using the worm type conveyor principle for handling and extracting or dosing granular and powder products. The product is handled horizontally or sloped in a linear way.

Our wide range of standard worm type conveyors provides capacities up to 300 m³/H.

For applications not included in this range, our Design Offices are qualified to develop specific screws meeting all requirements.

FEATURES

- Continuous pitch, with pallets or ribbon
- Regular, progressive or conical pitch
- Synthetic intermediate bearings
- V ring joints or felt sealing

OPTIONS

- Bronze or cast bearings, with or without wearing shell
- Sealing by gland with braids
- Spire height adjustment

ACCESSORIES

- Fast closing flap for dosing
- Valve with limited residues
- Bottom doors

SAFETY DEVICES

- ATEX compliance on request
- Rotation control
- Overflow detection
- Product flow detection



Screw conveyors

TYPES

- 2 types of screw conveyors :
 - Trough
 - Tubular
- Conical extracting screws

SPIRES

- The spire usually includes a tube on which a continuous thread is welded.
- They may be with pallets or ribbon.
- The pitch may be :
 - Regular for product conveyance
 - Progressive for product extraction



Screw feeders



Valve with limited residues

STOLZ

82 Route de Boisjean • 62170 • Wailly Beaucamp • France

Tél : +33 (0)3 21 90 05 05 • contact.stolz@desmet.com

www.desmet.com/stolz

 /Stolz